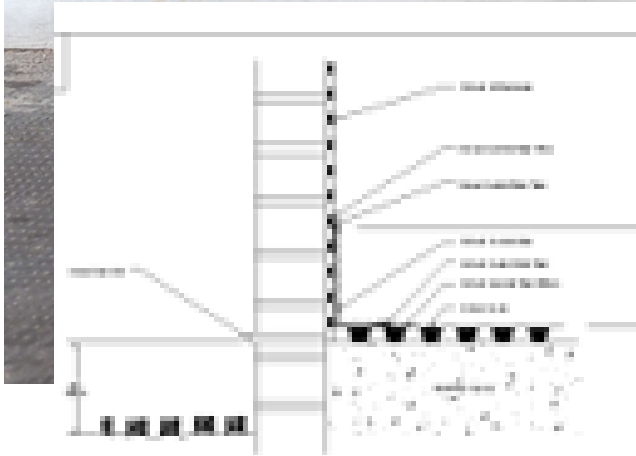




CREAM-BASED  
CHEMICAL  
DPC

# DRYZONE

2023



NO.	DESCRIPTION	QTY	UNIT
1	DRYZONE CREAM-BASED CHEMICAL DPC	1	KG
2	DRYZONE INJECTION TUBE	1	M
3	DRYZONE INJECTION GUN	1	PC
4	DRYZONE INJECTION MIXING TUB	1	PC
5	DRYZONE INJECTION MIXING GUN	1	PC
6	DRYZONE INJECTION MIXING TUB	1	PC
7	DRYZONE INJECTION MIXING GUN	1	PC
8	DRYZONE INJECTION MIXING TUB	1	PC
9	DRYZONE INJECTION MIXING GUN	1	PC
10	DRYZONE INJECTION MIXING TUB	1	PC
11	DRYZONE INJECTION MIXING GUN	1	PC
12	DRYZONE INJECTION MIXING TUB	1	PC
13	DRYZONE INJECTION MIXING GUN	1	PC
14	DRYZONE INJECTION MIXING TUB	1	PC
15	DRYZONE INJECTION MIXING GUN	1	PC
16	DRYZONE INJECTION MIXING TUB	1	PC
17	DRYZONE INJECTION MIXING GUN	1	PC
18	DRYZONE INJECTION MIXING TUB	1	PC
19	DRYZONE INJECTION MIXING GUN	1	PC
20	DRYZONE INJECTION MIXING TUB	1	PC

# The Best Product

DPC Injection Cream  
High Performance  
Make Your Home Comfortable

# Dryzone

## Product Description

Dryzone Damp-Proofing Cream is the industry standard for remedial rising damp treatments. It is a cream that is injected into holes drilled along a mortar bed using a special applicator gun. Once installed, the high strength formulation spreads along the mortar bed before curing to form a damp-proof course.

Dryzone's patented installation method has been optimised to ensure that it is effective on a wide range of mortar types, including the porous and low-alkalinity mortars typically found in Victorian buildings.

## Appearance



## Benefits

- Proven performance - approved by the BBA and numerous international test-houses
- Easy to install - no costly and complicated electric pumps required
- Usable in a wide variety of walls including brick, stone and rubble construction

It may be necessary to use more cream per 10cm under certain conditions, e.g. where the mortar course does not form a straight line, or in rubble infill walls.



## Properties

### Appearance

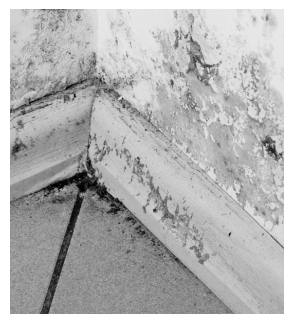
Appearance	Thick, white cream	
Size(s) & Packaging	600ml foil sausage	
Number of 600ml sausages required per 10 m wall <sup>[1]</sup>	4.5" thick wall	1.5
	9" thick wall	3
	13.5" thick wall	5.1
	18" thick wall	7
Storage	Store flat and in a cool, dry, well-ventilated place. Keep container closed.	
Shelf Life	18 months	

## Application Information

### Preparation

Set your SDS drill to rotary hammer and select a 12 mm drill bit in excess of the required drill depth. Depending on the thickness of the wall, mark the drill bit the following distances from the tip:

DEPTH OF DRILL HOLE	Wall Thickness			
	4½" (115 mm)	9" (230 mm)	13½" (345 mm)	18" (460 mm)
	95 mm	210 mm	325 mm	440 mm



## Wall thickness

Wall Length	4½" (115 mm)	9" (230 mm)	13½" (345 mm)	18" (460 mm)
10 m	1.5	3.3	5.1	6.9
20 m	3.0	6.6	10.2	13.8
30 m	4.5	9.9	15.3	20.7



## Application

When treating from outside a row of holes should be drilled into the mortar course 120 mm apart and approximately 150 mm above the ground. When treating from the inside the holes should be drilled into the lowest accessible mortar course.

Drill the holes the necessary depth ensuring you reduce your drilling pressure once you reach 40 mm short of the full hole depth. Reducing pressure ensures a cleaner hole and prevents damage to the far side of the wall.

Insert a Dryzone foil sausage into the applicator gun, ensuring the pressure piston is fully extended. Cut into the end of the cartridge so that cream will be able to flow freely. Screw the nozzle cap back onto the gun.

Fully insert the nozzle into the first drilled hole, and then inject Dryzone Damp-Proofing Cream while withdrawing the nozzle at a steady rate. Stop injecting just before removing the nozzle from the wall. Repeat for remaining holes. Minimum application temperature is 5 °C. Do not apply if freezing temperatures are expected over night.

## Health and Safety

- Avoid spillage onto patios, paths etc; flush away any spillage immediately using concentrated detergent solution.
- Do not contaminate glass or aluminium; wipe off any material immediately.
- For full safety information consult material data sheet – available on request.



## Other information

Information given is in good faith based on experience and usage, however all recommendations are made without warranty or guarantee, since the conditions of use are beyond our control. All goods are sold in accordance with our Conditions of Sale, copies of which are available on request. Customers are advised that products, techniques and codes of practice are under constant review and changes occur without notice; please ensure you have the latest updated information



Address: APD Industrial Park  
Cnr Elsecar & Bernie streets  
Kya Sand  
Johannesburg  
2163



011 7083603



[technical@safeguardchem.co.za](mailto:technical@safeguardchem.co.za)



[www.safeguardchem.co.za](http://www.safeguardchem.co.za)



[Safeguardchemicals](https://www.facebook.com/Safeguardchemicals)



[safeguardchemicals](https://www.instagram.com/safeguardchemicals)



[safeguard.chemicals](https://www.tiktok.com/@safeguard.chemicals)



[safeguardchemicalssa2888](https://www.youtube.com/channel/UCsafeguardchemicalssa2888)



[safeguard.chemicals](https://www.linkedin.com/company/safeguard.chemicals)