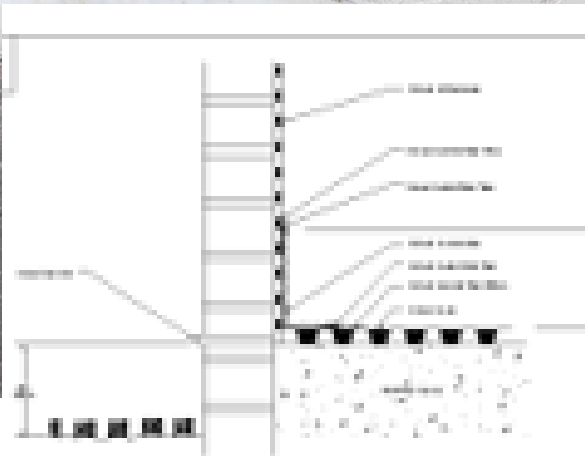




REPAIRING
SOLUTION

CONCRETE REPAIR

2023



REVISION	DATE	DESCRIPTION
1	01/2023	Initial Release
2	02/2023	Technical Updates
3	03/2023	Product Information
4	04/2023	Marketing Materials
5	05/2023	Final Review

The Best Product

Rapid Setting Plug In Mortar
High Performance
Stop Water Flow in Seconds

SG CONCRETE REPAIR

Product Description

SG Concrete Repair is a ready to use powder binder, made up of a blend, of activating chemicals and high grade silica aggregates. It requires only the additions of water and hardens to repair vertical and horizontal substrates in concrete and masonry.

Areas of Application

- Sealing Concrete conduits, drains and tanks
- Sinking and securing wooden plugs
- Stopping water minor leaks in underground structures, cellars and lift wells.
- concrete tunnel segments and pipes
- Pointing and patching repairs prior to application of water renders.

Benefits

- Sets in 3 minutes at +20°C
- Easy to use - simply add water
- Chloride free - no risk to steel reinforcement
- Non-Toxic - suitable for use in potable water systems
- Repairs vertical and horizontal substrates
- Pre-mixed - giving consistent quality and results
- Low shrinkage
- Very high mechanical strength after a few hours

Appearance	Grey Powder
Size(s) & Packaging	5 kg & 20kg Buckets
Coverage	Per application.
Storage	Store out of direct sunlight, clear of the ground on pallets protected from rain
Pot Life	Approx. 3 minutes
Shelf Life	12 Months



Application Information

Preparation

The substrate must be solid, strong free of oil, dust dirt, paint curing compounds and clean free of all friable material or other contaminants that could impair adhesion. Chase out masonry around holes or cracks to be filled to a depth of at least 25mm. If possible to increase the mechanical bond, form the chase or hole so that it is wider within the wall than at the surface (an inverted "v"). Wet the area to be patched immediately prior to application. Never use on a dry substrate. Do not add lime, cement, or gypsum to SG concrete Repair or to leveling or smoothing concrete floors.

Mixing

PREPARING THE MIX

200ml water mixed with 1kg SG Concrete Repair into a container and mix manually with a trowel or float to obtain a smooth mix with no lumps. Preparing large quantities an electric mixer is recommended.



Preparation

The substrate must be solid, strong free of oil, dust dirt, paint curing compounds and clean free of all friable material or other contaminants that could impair adhesion. Chase out masonry around holes or cracks to be filled to a depth of at least 25mm. If possible to increase the mechanical bond, form the chase or hole so that it is wider within the wall than at the surface (an inverted "v"). Wet the area be patched immediately prior to application. Never use on a dry substrate. Do not add lime, cement, or gypsum to SG concrete Repair or to leveling or smoothing concrete floors.

Applying the mix

Securing foundation bolts, hinges, tie-rods, etc.

Completely fill the appropriately prepared cavity with SG Concrete Repair and then insert the hinge, foundation bolt or tie-rod, using a trowel to finish off surface.

Securing sub-frames and window and door frames

Position frame and seal off anchor bolts with SG Concrete Repair, using a trowel to finish off surface and keep frame firmly in position for a few hours.

Stopping small water leaks

After preparing the mix, wait a few minutes before applying it so that the material warms up and begins to cure. At this point, with gloved hands, force SG Concrete Repair into the cavity and keep it pressed down until it has set.

Limitations

Under NO circumstances should water be increased beyond the recommended ration. Materials will have a semi-dry consistency to allow for hydration to take place with leakage water.

Equipment Care

Clean tools and equipment immediately after use with water. Hardened SG Concrete repair can only be removed mechanically.

Other information

Information given is in good faith based on experience and usage, however all recommendations are made without warranty or guarantee, since the conditions of use are beyond our control. All goods are sold in accordance with our Conditions of Sale, copies of which are available on request. Customers are advised that products, techniques and codes of practice are under constant review and changes occur without notice; please ensure you have the latest updated information

Health and Safety

Avoid spillage onto patios, paths etc; flush away any spillage immediately using concentrated detergent solution. Do not contaminate glass or aluminium; wipe off any material immediately. For full safety information consult material data sheet - available on request.



Address: APD Industrial Park
Cnr Elsecar & Bernie streets
Kya Sand
Johannesburg
2163



011 7083603



technical@safeguardchem.co.za



www.safeguardchem.co.za



[Safeguardchemicals](https://www.facebook.com/Safeguardchemicals)



[safeguardchemicals](https://www.instagram.com/safeguardchemicals)



[safeguard.chemicals](https://www.tiktok.com/@safeguard.chemicals)



[safeguardchemicalssa2888](https://www.youtube.com/channel/UCsafeguardchemicalssa2888)



[safeguard.chemicals](https://www.linkedin.com/company/safeguard.chemicals)