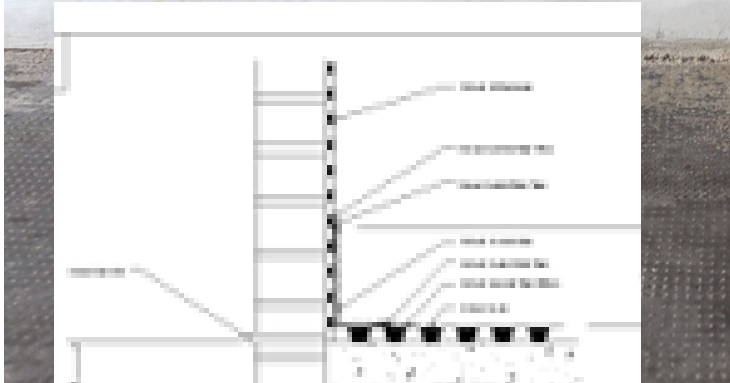




READY TO USE
BONDING LIQUID

BONDING LIQUID

2023



PROPERTY	UNIT	VALUE	TEST METHOD
Compressive Strength	MPa	35.0	ASTM C109
Tensile Strength	MPa	1.5	ASTM C109
Modulus of Elasticity	GPa	14.0	ASTM C109
Water Absorption	%	12.0	ASTM C109
Water Permeability	cm/s	0.0001	ASTM E911
Chloride Ion Penetration	cm	100	ASTM C1202
Acid-Soluble Silica	%	1.0	ASTM C1287
Alkali Content	%	0.5	ASTM C1287
Free Water	%	5.0	ASTM C1287
Free Air	%	2.0	ASTM C1287
Free Water + Free Air	%	7.0	ASTM C1287
Free Water + Free Air + Chloride Ion Penetration	%	17.0	ASTM C1287
Free Water + Free Air + Chloride Ion Penetration + Acid-Soluble Silica	%	18.0	ASTM C1287

The Best Product

RTU Cement Additive
High Performance
Make Your Buildings Dry

BONDING LIQUID



Product Description

Bonding Liquid is a styrene-butadiene rubber latex (SBR) which has been specifically designed for use with cement compositions and as a primer to improve bonding. When incorporated into cement mortar mixes it forms polymer modified systems which exhibit excellent adhesion, improved tensile and flexural strength, as well as resistance to water and water vapour. Bonding Liquid mixes are non-toxic and can be used with potable water.

Benefits

- Improves adhesion of slurry coats and sand/cement mixes
- Increases resistance to salt efflorescence
- Improves workability
- Increases flexibility of cement-based materials
- Enhances response to thermal movements

Properties

Appearance	White/milky liquid
Size(s) & Packaging	5L and 25L drums
Adhesion	Excellent to concrete, brickwork, tiles, timber, glass etc.
Storage	Store in a cool, well-ventilated area. Keep container tightly closed. Protect from frost
Shelf Life	12 months
Compressive strength	69N/mm ²
Flexure Strength	13N/mm ³
Tensile strength	6.5N/mm ²
Shrinkage during cure	0.01%

Application Information

Preparation

Prior to the application of Bonding Liquid either in the form of a primer coat, slurry coat or modified mix, the substrate surface must be fully prepared. Any exposed reinforcing steel must be clean and free from grease, oil, scale and rust. If being used to repair spalled or damaged concrete ensure the background is cut back to sound material.

Mixing

When used with Latseal/SWS Slurry, Bonding Liquid use 6 -8 liters of the resulting mixture with every 25Kg bag of Latseal/SWS Slurry . If used in the gauging water of a sand and cement mix, the excellent plasticising properties of the Bonding Liquid will mean that less water is required. Add any further water cautiously as rapid thinning can occur.



Health and Safety

Avoid spillage onto patios, paths etc; flush away any spillage immediately using concentrated detergent solution.

Do not contaminate glass or aluminium; wipe off any material immediately.

For full safety information consult material data sheet – available on request.

Other information

Information given is in good faith based on experience and usage, however all recommendations are made without warranty or guarantee, since the conditions of use are beyond our control. All goods are sold in accordance with our Conditions of Sale, copies of which are available on request. Customers are advised that products, techniques and codes of practice are under constant review and changes occur without notice; please ensure you have the latest updated information



Address: APD Industrial Park
Cnr Elsecar & Bernie streets
Kya Sand
Johannesburg
2163



011 7083603



technical@safeguardchem.co.za



www.safeguardchem.co.za



Safeguardchemicals



[safeguardchemicals](https://www.instagram.com/safeguardchemicals)



[safeguard.chemicals](https://www.tiktok.com/@safeguard.chemicals)



[safeguardchemicalssa2888](https://www.youtube.com/channel/UCsafeguardchemicalssa2888)



[safeguard.chemicals](https://www.linkedin.com/company/safeguard.chemicals)