

DM4A Moisture Meter

Universal moisture meter for measuring moisture content in wood, building materials, paper, cardboards and numerous other materials

Conforms to: DIN EN.50081 & 2 (CE Rated)



New model to replace BD2, PD2, HD5 which were used by : Plascon, Dulux, Prov. Admin, Joineries, Furniture mfrs, SA Navy, Ivory Industrial, Concor, Everite etc

No damage to materials. Only put on and read !

Features

The pocket size, robust, hand held, electronic moisture meter is suitable for a quick determination of the moisture. The materials are merely touched and the % moisture appears on the display. (approximately one reading every 2 seconds)

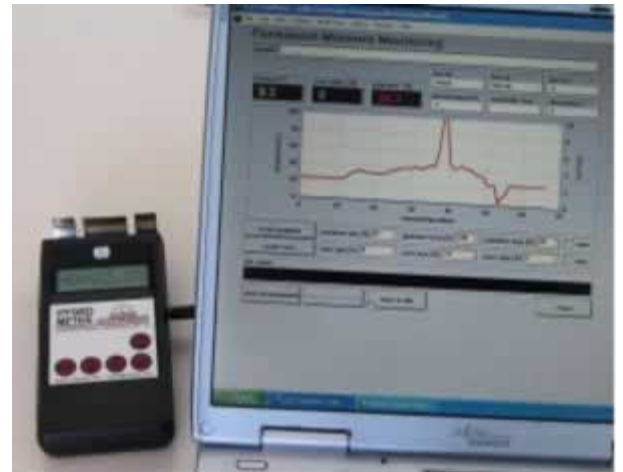
The depth of penetration of the measuring field into the material is approximately 30 mm, thereby the moisture in low lying layers is obtained as well. The average moisture % is shown.

Time consuming preparations (ie drilling holes & waiting for heat to dissipate) are no longer required.

Supplied in foam lined pouch with instructions

Other features include

- material group setting by means of a membrane-type keypad
- the adjusted material group can always be seen in the display
- microprocessor controlled measuring with automatic zero point correction
- up to 10 different customer specific linearisation curves, with up to 8 free programmable linearisation points can be implemented
- storage for 100 moisture values
- automatic calculation of maximum, average and minimum value
- fixed linearisation curves for a lot of common materials are already stored and can be selected
- the instrument's calibration can be checked with the optional calibration modules PE05 and PE30



Optional Extras

- Software DMI-Controller which includes RS232 serial interface cable for connecting to a PC
 - different settings can be chosen and measured and stored. These values can then be transferred to the PC for analysis and storing on a disc.
- the instrument can be made with an aluminium casing for better protection against mechanical and electrostatic influence

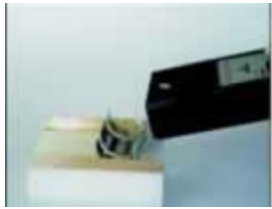
Technical data

Measuring range:	0 -100% (adjustable)
Resolution:	0.1%
Measuring frequency:	1 -10 Meas. / sec. (adjustable)
Attenuation:	0 -99% (adjustable)
Measurement storage:	100 values
Dimension:	approx. 200 x 80 x 40 mm
Weight:	approx. 250 g
Battery:	lithium U9VL battery with 1,2 Ah capacity will outlast normal 9v PP3 by over 10 times

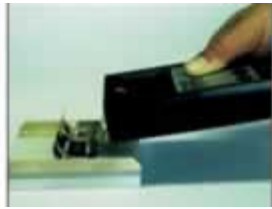


BAMR (Pty) Ltd, PO Box 23973, Claremont, 7735, South Africa
 Ph : 27 (0)21 683 2100, Fax : 27 (0)21 674 1485
 Email : sales@bamr.co.za Web : www.bamr.co.za

Optional Extras



test module PE30



test module PE05

PC Software
DMI-ControllerSerial Interface cable
(RS232)

USB - R232 adapter

Alternative moisture meters

- **DS4A** with bigger storage, connectors for additional sensors as temperature and air humidity, data logger for up to 4000 values, PC-Interface
- **A10/20, H24/70, P12/20** (with analogue display)
- **G812** (special instrument for screeds)
- **PD5** for waste paper
- **DM7** similar to the DM4A but with special sensor for measuring moisture in veneers, corrugated cardboards, single flat cardboard & cardboard pipes & rolls
- **GM32, GM42, GM53, GM54** (price sensitive meters)
- **LWM2** (conductance measuring principle with pins)

Measuring Principle (Capacitive) : The micro processor controlled moisture meter measures the moisture indirectly in determining the dielectric constant. Therefore a capacitive measurement is done over a high frequency, electronic field, which passes through the material without damaging it.

Neutral Point : The neutral point (np) is continuously monitored and is automatically corrected by the micro processor.

Measuring Process : After pressing the "on" button and holding the meter in the air, to obtain the automatic neutral point, the 3 spring steel sensors must be firmly pressed onto the material to be tested. The reading is retained until the next reading is made.

Selecting material setting : Press "mat" - key, choose material with arrow keys (up or down) and set it by pressing the "ok" pad (see list below)

BD2 Setting on the DM4A :

A	TIMBER	B	BUILDING MATERIALS
A1	Fir, Hemlock, Poplar, Ilomba	B1	Ytong
A2	Cedar, Chestnut, Lime, Pine	B2	Bricks, Plastering, Wall - Tiles
A3	Ash, Birch, Beech, Cherry, Elm, Nut, Red - Oak	B3	Sand, Cement - Eternit - Slabs, Floor - Tiles, Anhydride - Flooring
A4	Apple - Tree, Pear - Tree, Oak, White Beech, Particle (Chip) Board	B4	Water - Proof - Screed, Concrete
A5	Hardboard	B5	Marble

PD2 Setting on the DM4A :

P1	Filter Paper, Wrapping Tissue
P2	Crepe Paper, Semi Chemical Fluting Medium, Testliner, "Schrenz"
P3	Recycled Fluting Medium, Wrapping Paper
P4	Kraft Paper
P5	Offset Paper

HD5 Setting on the DM4A :

H1:	Balsa
H2:	Abachi
H3:	Fir, Gobun, Hemlock, Ilombo, Louen, Meranti-Light, Oregon-Pine, Poplar, Red-Pine
H4:	Carollnapine, Cedro, Pine, Limba, Lime, Horsechestnut, Silverwillow, Cedar
H5:	Ahorn, Ash, Birch, Beech, Cherry, Elm, Nut, Pitch-Pine, Red-Oak, Ramin, Sipo, Teak
H6:	Apple, Insulation Board, Meranti Dark, Merbau, Oak, Pear, Padouk, White-Pine, Zebrano
H7:	Jarrach, Keruing, Macore, Mahogany, Particle Board, Red-Balau, Wenge
H8:	Bongossi, Cocobolo, Ebony

